

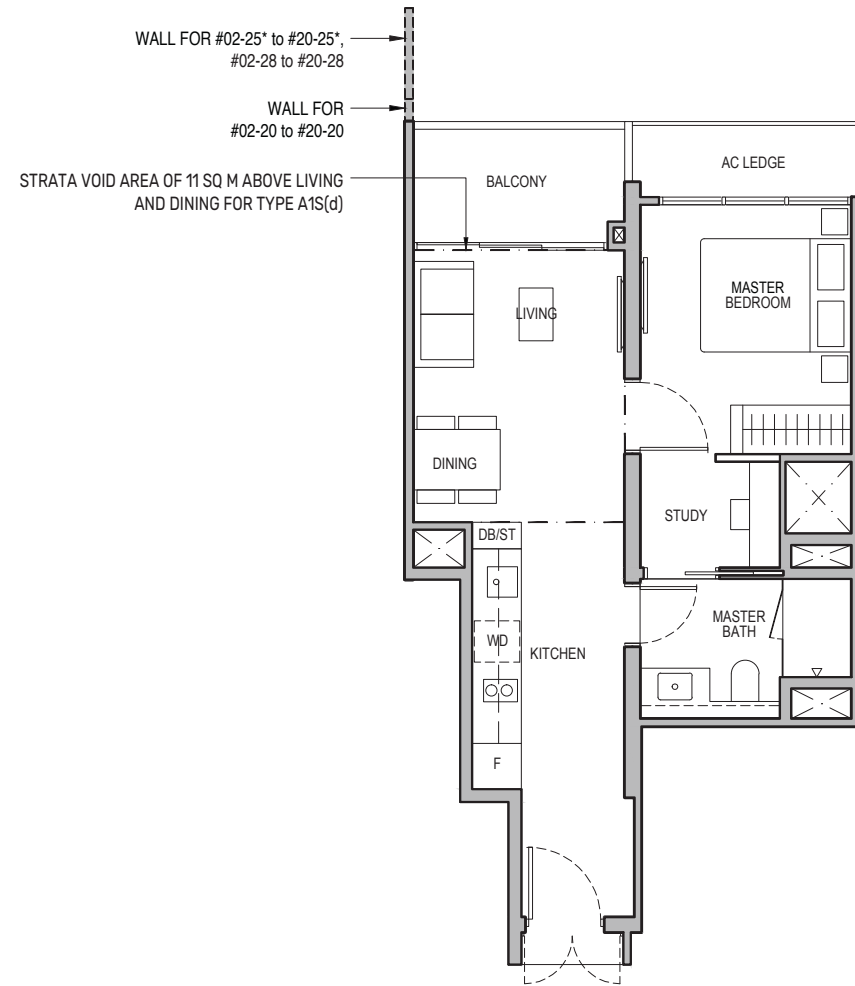
# 1-Bedroom + Study

## Type A1S

49 sq m / 527 sq ft

BLK 96 : #02-20 to #19-20

BLK 98 : #02-25\* to #19-25\*, #02-28 to #19-28



## Type A1S(d)

60 sq m / 646 sq ft

BLK 96 : #20-20

BLK 98 : #20-25\*, #20-28

Including strata void area of 11 sq m above living and dining with 4.4m floor to ceiling height

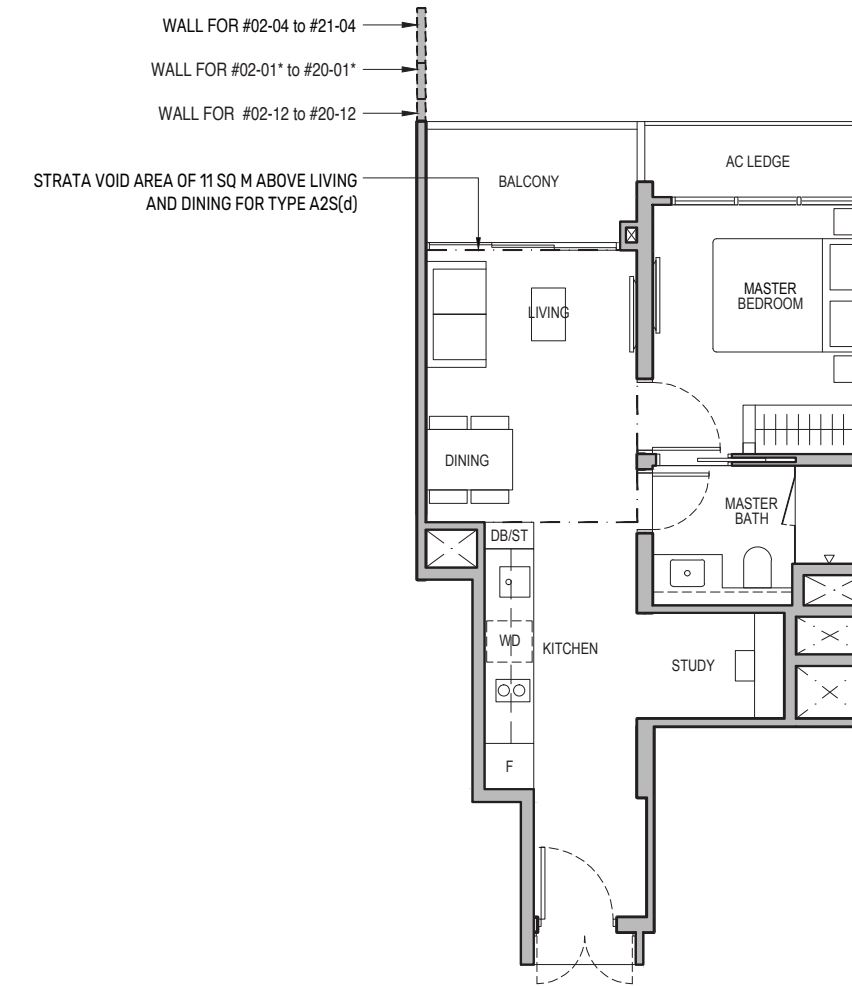
# 1-Bedroom + Study

## Type A2S

49 sq m / 527 sq ft

BLK 92 : #02-01\* to #19-01\*, #02-04 to #20-04

BLK 94 : #02-12 to #19-12



## Type A2S(d)

60 sq m / 646 sq ft

BLK 92 : #20-01\*, #21-04

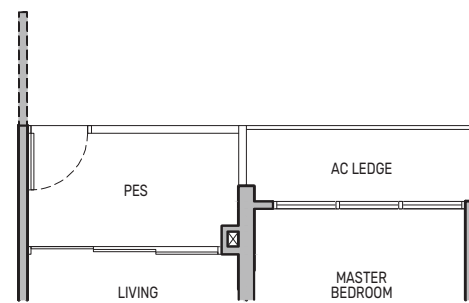
BLK 94 : #20-12

Including strata void area of 11 sq m above living and dining with 4.4m floor to ceiling height

## Type A1S(p)

49 sq m / 527 sq ft

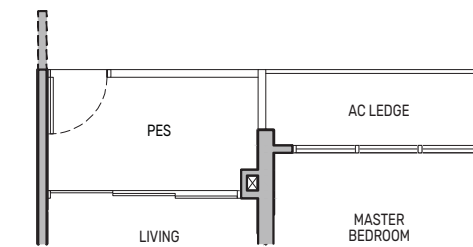
BLK 98 : #01-25\*



## Type A2S(p)

49 sq m / 527 sq ft

BLK 92 : #01-01\*



0 0.5 1 2 5M

PES - Private Enclosed Space  
 F - Fridge  
 HS - Household Shelter  
 RC - Reinforced Concrete

WD - Washer cum Dryer  
 W/D - Washer & Dryer  
 W - Washer  
 D - Dryer

DB/ST - Distribution Board/Storage  
 WC - Water Closet  
 DW - Dishwasher  
 AC - Air-Conditioner

Wall not allowed to be hacked or altered

\* Mirror Image

Area includes air-conditioner (AC) ledge, balcony and strata void area where applicable. The plans are subject to change as may be approved by relevant authorities. All floor plans are approximate measurements only and are subject to government re-survey. The balcony shall not be enclosed unless with the approved balcony screen. For an illustration of the approved balcony screen, please refer to the diagram annexed hereto as "Annexure A".



Keyplan is not drawn to scale

0 0.5 1 2 5M

PES - Private Enclosed Space  
 F - Fridge  
 HS - Household Shelter  
 RC - Reinforced Concrete

WD - Washer cum Dryer  
 W/D - Washer & Dryer  
 W - Washer  
 D - Dryer

DB/ST - Distribution Board/Storage  
 WC - Water Closet  
 DW - Dishwasher  
 AC - Air-Conditioner

Wall not allowed to be hacked or altered

\* Mirror Image

Area includes air-conditioner (AC) ledge, balcony and strata void area where applicable. The plans are subject to change as may be approved by relevant authorities. All floor plans are approximate measurements only and are subject to government re-survey. The balcony shall not be enclosed unless with the approved balcony screen. For an illustration of the approved balcony screen, please refer to the diagram annexed hereto as "Annexure A".

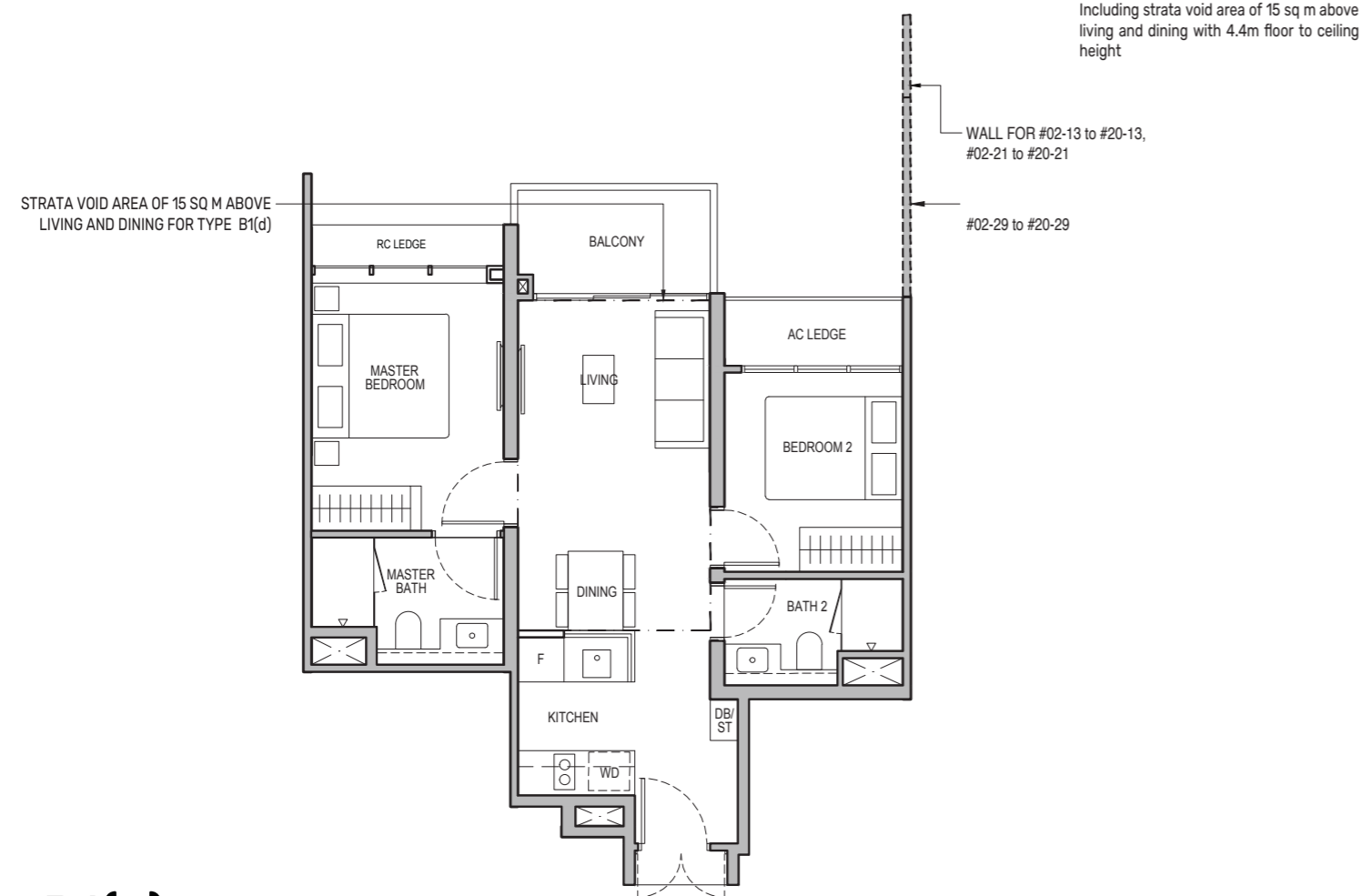


Keyplan is not drawn to scale

# 2-Bedroom

## Type B1

62 sq m / 667 sq ft  
 BLK 92 : #02-05 to #20-05  
 BLK 94 : #02-13 to #19-13  
 BLK 96 : #02-21 to #19-21  
 BLK 98 : #02-29 to #19-29



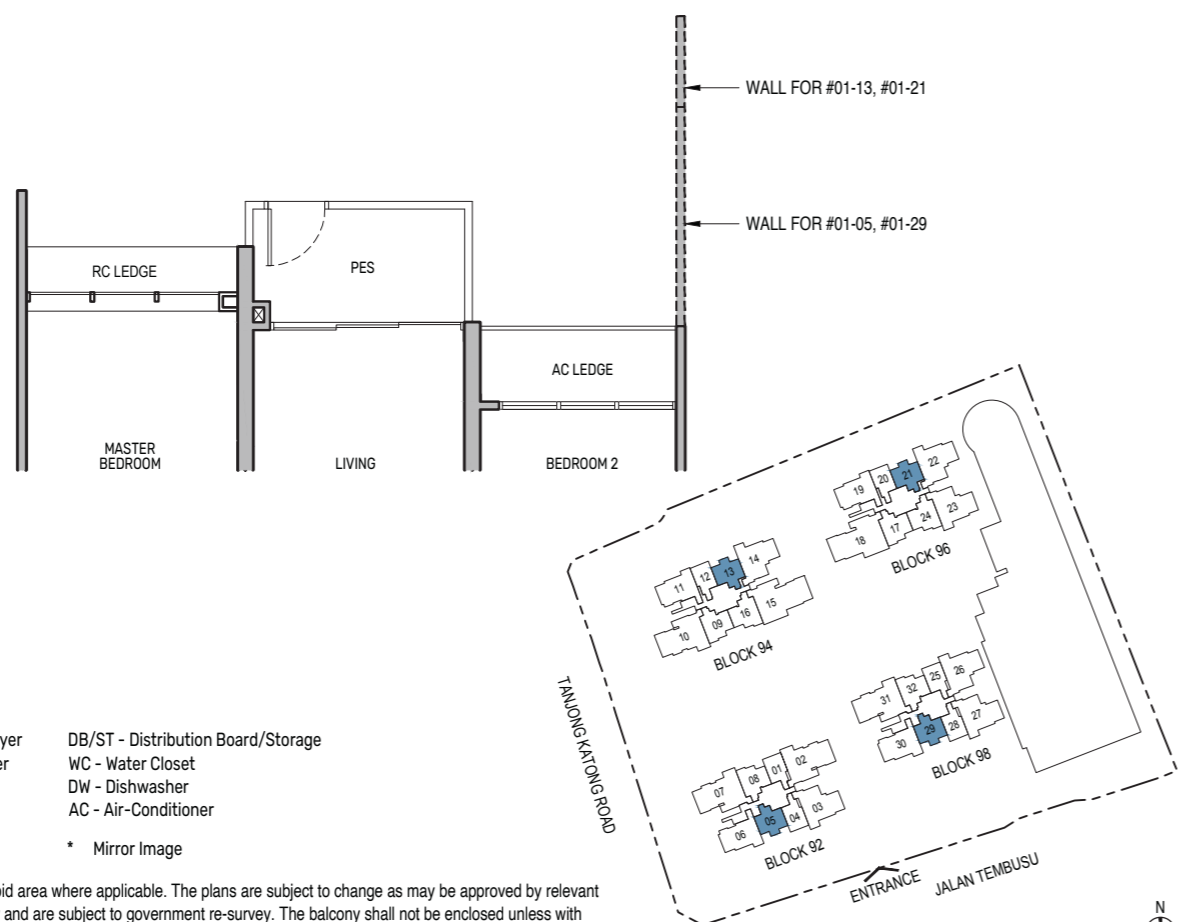
## Type B1(d)

77 sq m / 829 sq ft  
 BLK 92 : #21-05  
 BLK 94 : #20-13  
 BLK 96 : #20-21  
 BLK 98 : #20-29

Including strata void area of 15 sq m above living and dining with 4.4m floor to ceiling height

## Type B1(p)

62 sq m / 667 sq ft  
 BLK 92 : #01-05  
 BLK 94 : #01-13  
 BLK 96 : #01-21  
 BLK 98 : #01-29



0 0.5 1 2 5M

PES - Private Enclosed Space  
 F - Fridge  
 HS - Household Shelter  
 RC - Reinforced Concrete  
 WD - Washer cum Dryer  
 W/D - Washer & Dryer  
 W - Washer  
 D - Dryer  
 DB/ST - Distribution Board/Storage  
 WC - Water Closet  
 DW - Dishwasher  
 AC - Air-Conditioner

Wall not allowed to be hacked or altered

Mirror Image

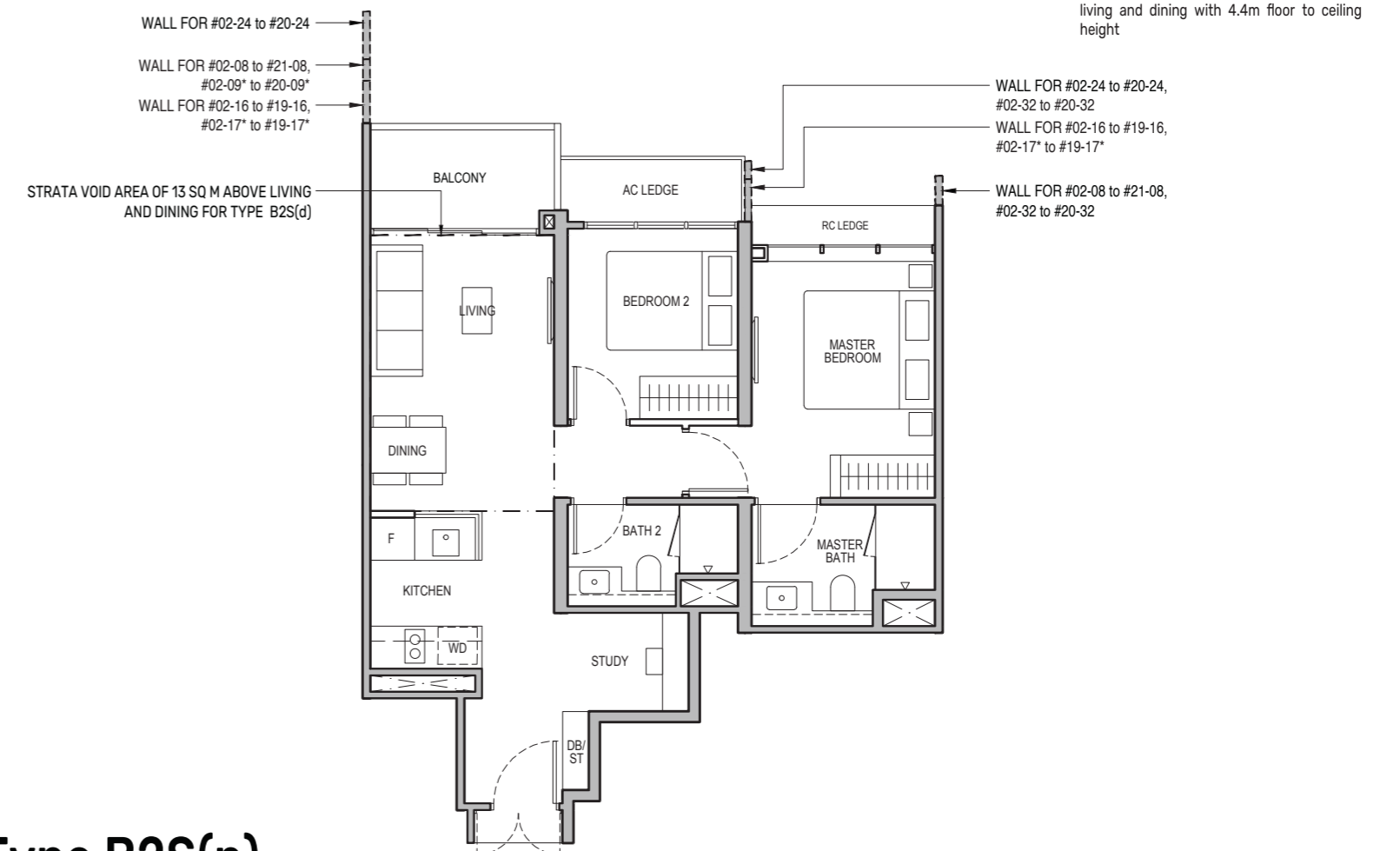
Area includes air-conditioner (AC) ledge, balcony and strata void area where applicable. The plans are subject to change as may be approved by relevant authorities. All floor plans are approximate measurements only and are subject to government re-survey. The balcony shall not be enclosed unless with the approved balcony screen. For an illustration of the approved balcony screen, please refer to the diagram annexed hereto as "Annexure A".

Keyplan is not drawn to scale

# 2-Bedroom + Study

## Type B2S

69 sq m / 743 sq ft  
 BLK 92 : #02-08 to #20-08  
 BLK 94 : #02-09\* to #19-09\*, #02-16 to #19-16  
 BLK 96 : #02-17\* to #19-17\*, #02-24 to #19-24  
 BLK 98 : #02-32 to #19-32



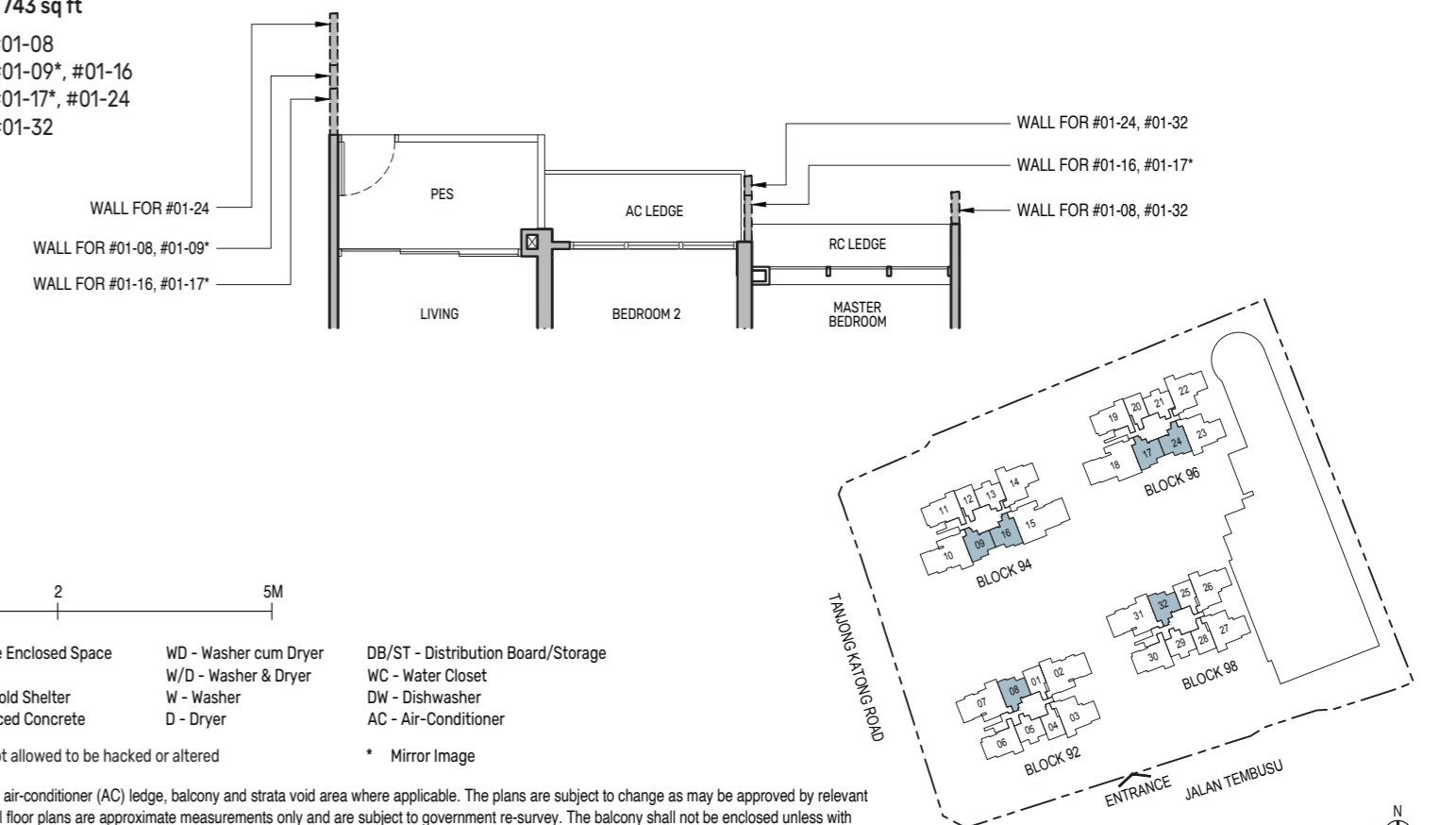
## Type B2S(d)

82 sq m / 883 sq ft  
 BLK 92 : #21-08  
 BLK 94 : #20-09\*  
 BLK 96 : #20-24  
 BLK 98 : #20-32

Including strata void area of 13 sq m above living and dining with 4.4m floor to ceiling height

## Type B2S(p)

69 sq m / 743 sq ft  
 BLK 92 : #01-08  
 BLK 94 : #01-09\*, #01-16  
 BLK 96 : #01-17\*, #01-24  
 BLK 98 : #01-32



0 0.5 1 2 5M

PES - Private Enclosed Space  
 F - Fridge  
 HS - Household Shelter  
 RC - Reinforced Concrete  
 WD - Washer cum Dryer  
 W/D - Washer & Dryer  
 W - Washer  
 D - Dryer  
 DB/ST - Distribution Board/Storage  
 WC - Water Closet  
 DW - Dishwasher  
 AC - Air-Conditioner

Wall not allowed to be hacked or altered

Mirror Image

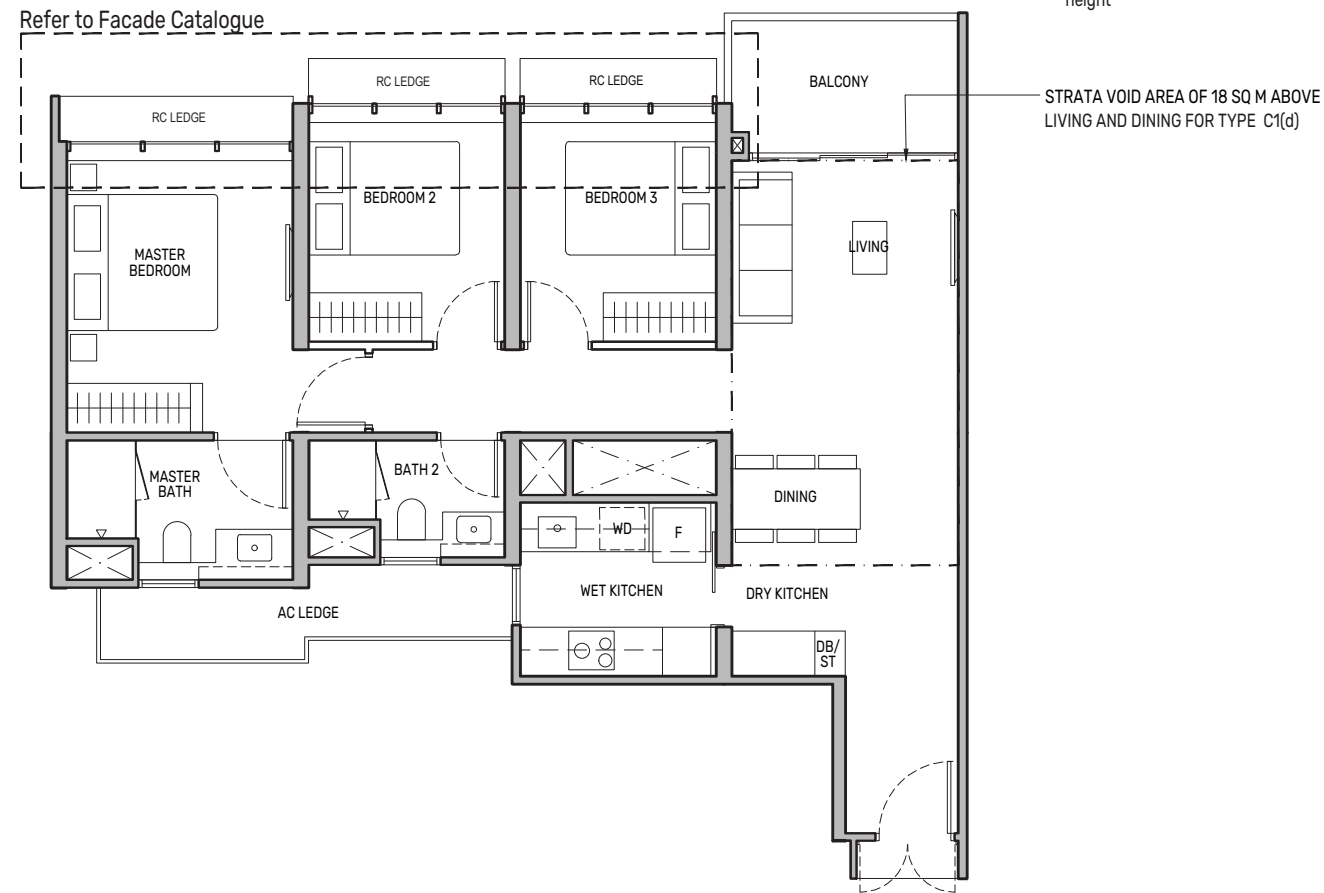
Area includes air-conditioner (AC) ledge, balcony and strata void area where applicable. The plans are subject to change as may be approved by relevant authorities. All floor plans are approximate measurements only and are subject to government re-survey. The balcony shall not be enclosed unless with the approved balcony screen. For an illustration of the approved balcony screen, please refer to the diagram annexed hereto as "Annexure A".

Keyplan is not drawn to scale

# 3-Bedroom

## Type C1

92 sq m / 990 sq ft  
 BLK 92 : #02-06\* to #20-06\*  
 BLK 94 : #02-11 to #19-11  
 BLK 96 : #02-19 to #19-19  
 BLK 98 : #03-30\* to #19-30\*

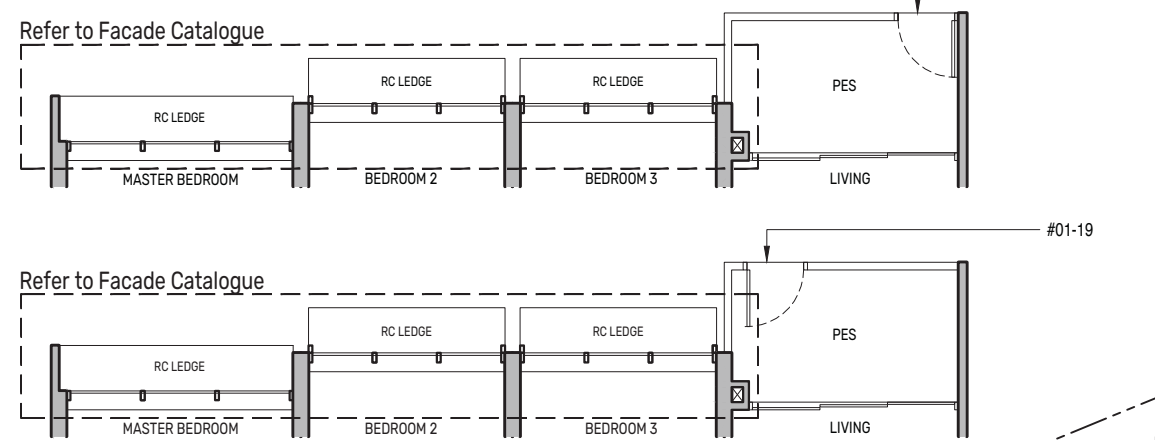


## Type C1(d)

110 sq m / 1184 sq ft  
 BLK 92 : #21-06\*  
 BLK 94 : #20-11  
 BLK 96 : #20-19  
 BLK 98 : #20-30\*  
 Including strata void area of 18 sq m above living and dining with 4.4m floor to ceiling height

## Type C1(p)

92 sq m / 990 sq ft  
 BLK 92 : #01-06\*  
 BLK 94 : #01-11  
 BLK 96 : #01-19



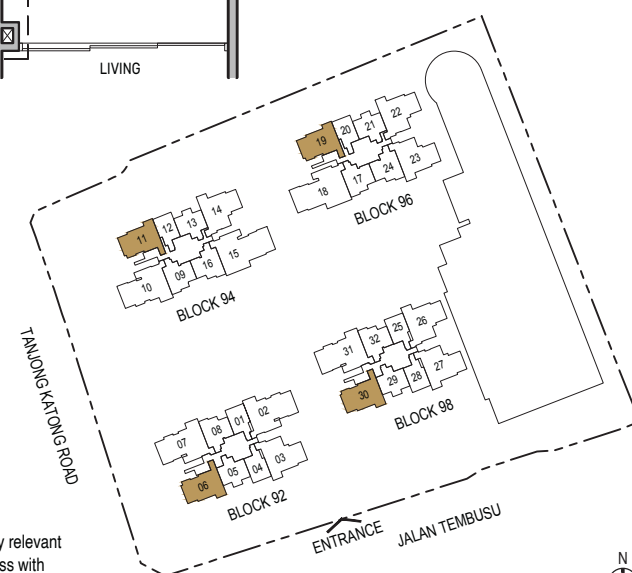
0 0.5 1 2 5M

PES - Private Enclosed Space  
 F - Fridge  
 HS - Household Shelter  
 RC - Reinforced Concrete  
 WD - Washer cum Dryer  
 W/D - Washer & Dryer  
 W - Washer  
 D - Dryer  
 DB/ST - Distribution Board/Storage  
 WC - Water Closet  
 DW - Dishwasher  
 AC - Air-Conditioner

Wall not allowed to be hacked or altered

\* Mirror Image

Area includes air-conditioner (AC) ledge, balcony and strata void area where applicable. The plans are subject to change as may be approved by relevant authorities. All floor plans are approximate measurements only and are subject to government re-survey. The balcony shall not be enclosed unless with the approved balcony screen. For an illustration of the approved balcony screen, please refer to the diagram annexed hereto as "Annexure A".

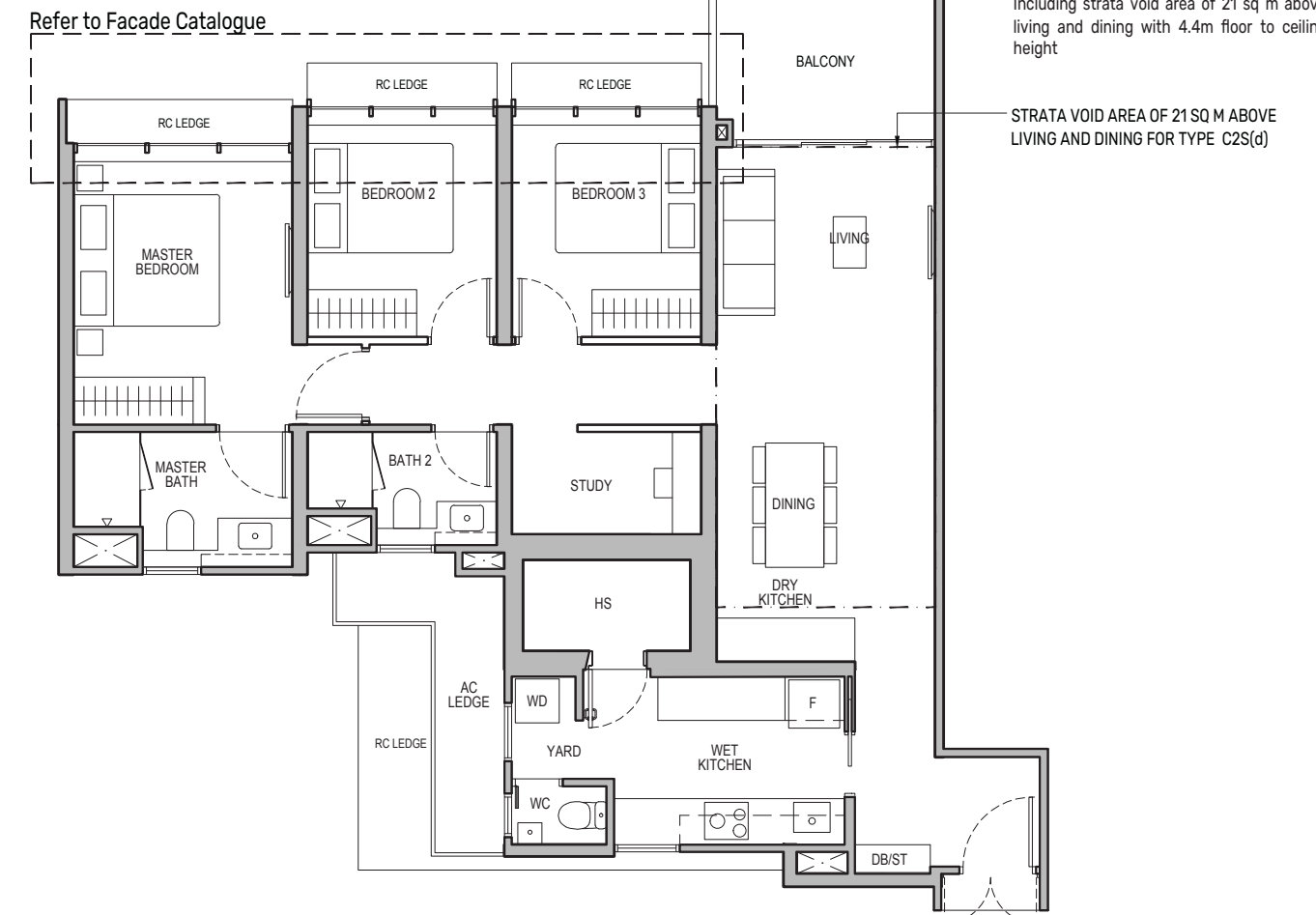


Keyplan is not drawn to scale

# 3-Bedroom + Study

## Type C2S

109 sq m / 1173 sq ft  
 BLK 92 : #02-03 to #20-03  
 BLK 94 : #02-14\* to #19-14\*  
 BLK 96 : #02-22\* to #19-22\*, #02-23 to #19-23  
 BLK 98 : #02-26\* to #19-26\*, #02-27 to #19-27

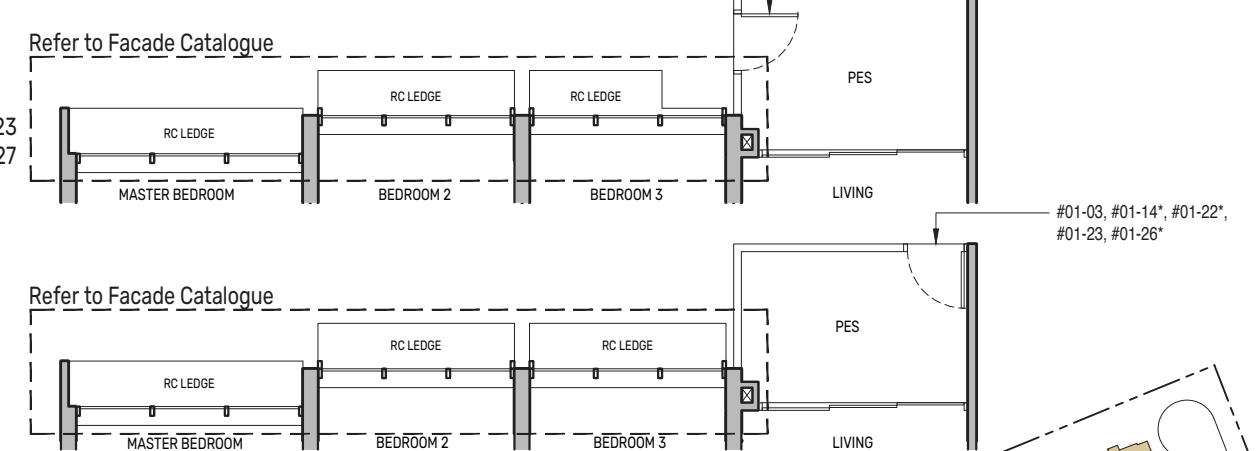


## Type C2S(d)

130 sq m / 1399 sq ft  
 BLK 92 : #21-03  
 BLK 94 : #20-14\*  
 BLK 96 : #20-22\*, #20-23  
 BLK 98 : #20-26\*, #20-27  
 Including strata void area of 21 sq m above living and dining with 4.4m floor to ceiling height

## Type C2S(p)

109 sq m / 1173 sq ft  
 BLK 92 : #01-03  
 BLK 94 : #01-14\*  
 BLK 96 : #01-22\*, #01-23  
 BLK 98 : #01-26\*, #01-27



0 0.5 1 2 5M

PES - Private Enclosed Space  
 F - Fridge  
 HS - Household Shelter  
 RC - Reinforced Concrete  
 WD - Washer cum Dryer  
 W/D - Washer & Dryer  
 W - Washer  
 D - Dryer  
 DB/ST - Distribution Board/Storage  
 WC - Water Closet  
 DW - Dishwasher  
 AC - Air-Conditioner

Wall not allowed to be hacked or altered

\* Mirror Image

Area includes air-conditioner (AC) ledge, balcony and strata void area where applicable. The plans are subject to change as may be approved by relevant authorities. All floor plans are approximate measurements only and are subject to government re-survey. The balcony shall not be enclosed unless with the approved balcony screen. For an illustration of the approved balcony screen, please refer to the diagram annexed hereto as "Annexure A".



Keyplan is not drawn to scale

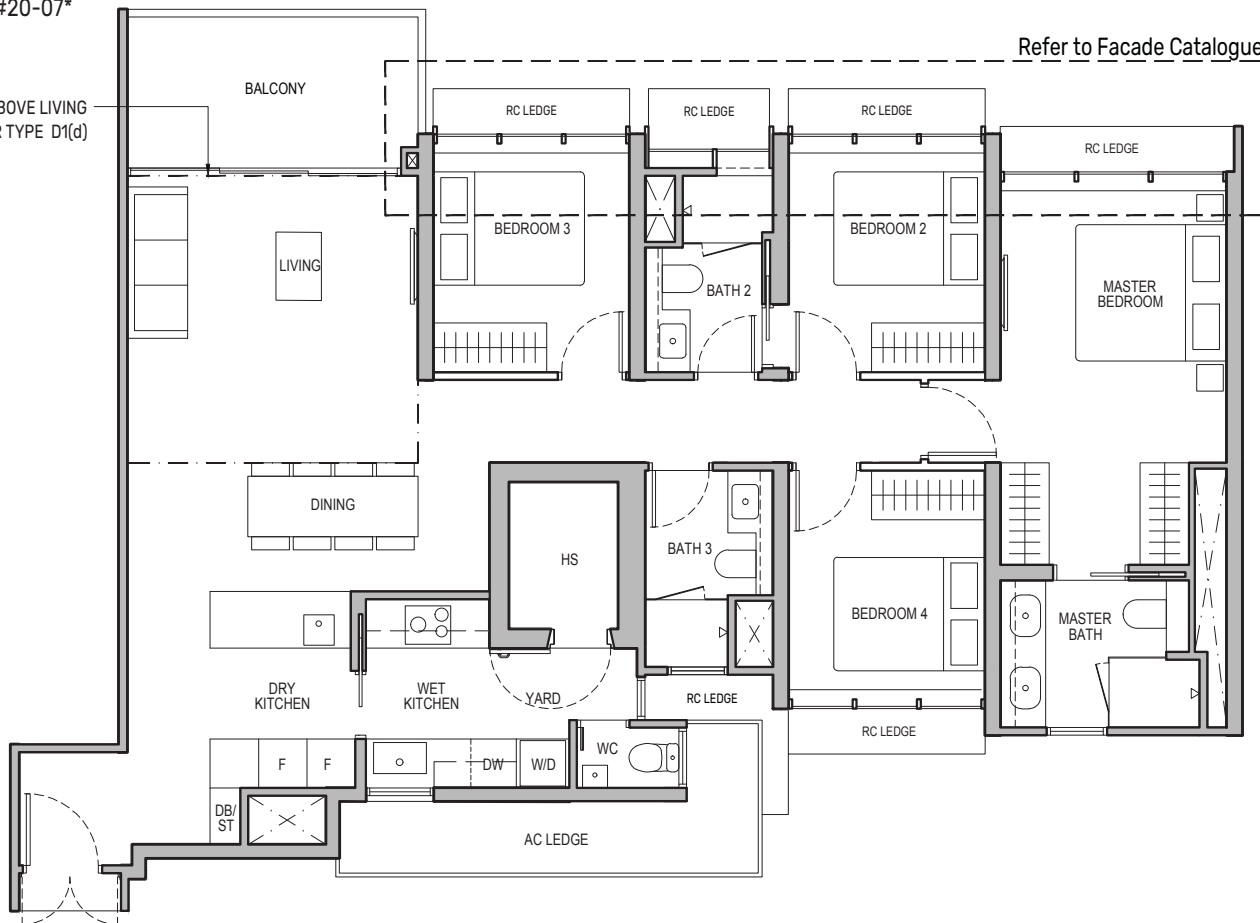
# 4-Bedroom

## Type D1

133 sq m / 1432 sq ft

BLK 92 : #02-02 to #19-02, #02-07\* to #20-07\*  
 BLK 94 : #02-10 to #19-10  
 BLK 98 : #02-31\* to #19-31\*

STRATA VOID AREA OF 16 SQ M ABOVE LIVING AND DINING FOR TYPE D1(d)



Refer to Facade Catalogue

## Type D1(d)

149 sq m / 1604 sq ft

BLK 92 : #20-02, #21-07\*  
 BLK 94 : #20-10  
 BLK 98 : #20-31\*

Including strata void area of 16 sq m above living and dining with 4.4m floor to ceiling height

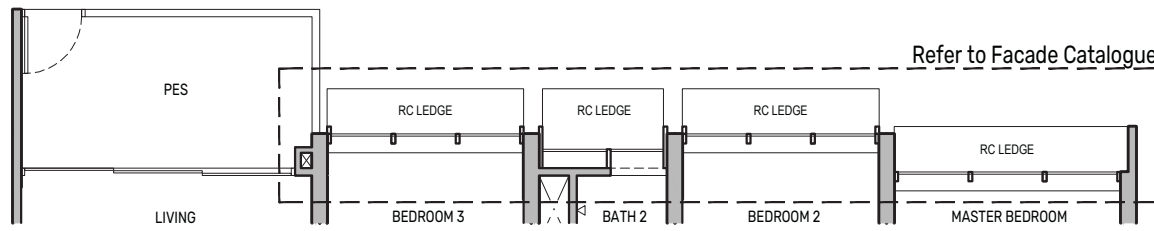
## Type D1(p)

133 sq m / 1432 sq ft

BLK 92 : #01-02, #01-07\*  
 BLK 94 : #01-10  
 BLK 98 : #01-31\*



Wall not allowed to be hacked or altered  
 Mirror Image



Refer to Facade Catalogue

PES - Private Enclosed Space  
 F - Fridge  
 HS - Household Shelter  
 RC - Reinforced Concrete  
 WD - Washer cum Dryer  
 W/D - Washer & Dryer  
 W - Washer  
 D - Dryer  
 DB/ST - Distribution Board/Storage  
 WC - Water Closet  
 DW - Dishwasher  
 AC - Air-Conditioner

Area includes air-conditioner (AC) ledge, balcony and strata void area where applicable. The plans are subject to change as may be approved by relevant authorities. All floor plans are approximate measurements only and are subject to government re-survey. The balcony shall not be enclosed unless with the approved balcony screen. For an illustration of the approved balcony screen, please refer to the diagram annexed hereto as "Annexure A".

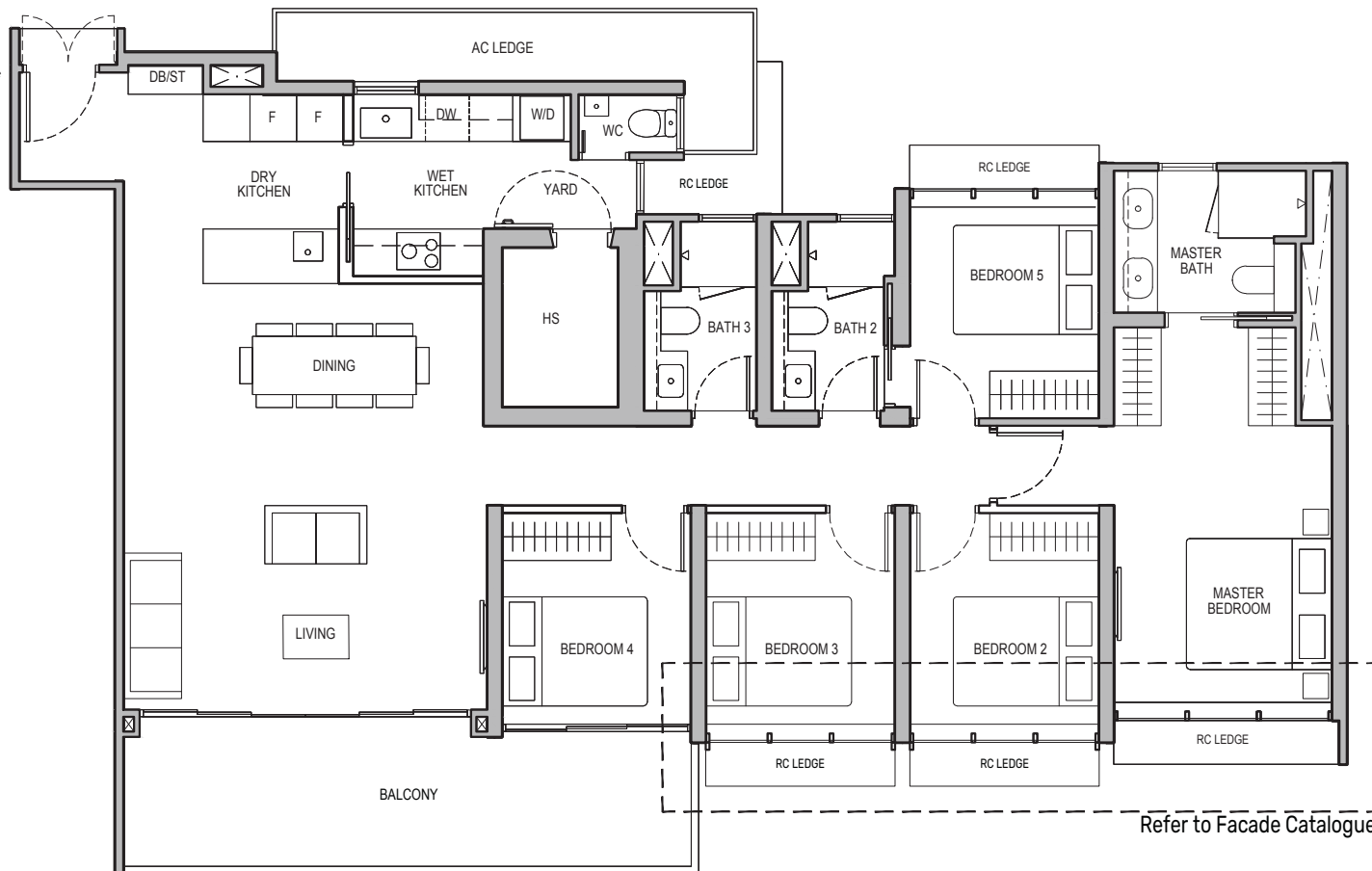


# 5-Bedroom

## Type E1

159 sq m / 1711 sq ft

BLK 94 : #02-15 to #19-15  
 BLK 96 : #02-18\* to #19-18\*



Refer to Facade Catalogue

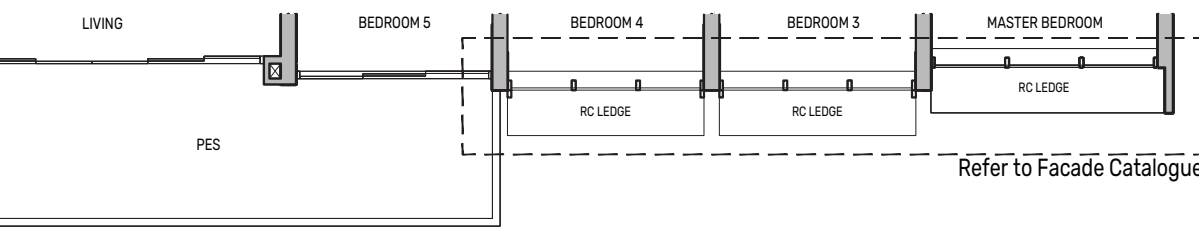
## Type E1(p)

159 sq m / 1711 sq ft

BLK 94 : #01-15  
 BLK 96 : #01-18\*



Wall not allowed to be hacked or altered  
 Mirror Image



Refer to Facade Catalogue

PES - Private Enclosed Space  
 F - Fridge  
 HS - Household Shelter  
 RC - Reinforced Concrete  
 WD - Washer cum Dryer  
 W/D - Washer & Dryer  
 W - Washer  
 D - Dryer  
 DB/ST - Distribution Board/Storage  
 WC - Water Closet  
 DW - Dishwasher  
 AC - Air-Conditioner

Area includes air-conditioner (AC) ledge, balcony and strata void area where applicable. The plans are subject to change as may be approved by relevant authorities. All floor plans are approximate measurements only and are subject to government re-survey. The balcony shall not be enclosed unless with the approved balcony screen. For an illustration of the approved balcony screen, please refer to the diagram annexed hereto as "Annexure A".



TEMBUSU GRAND